

CERTIFIED LAND CORNER RECORDATION

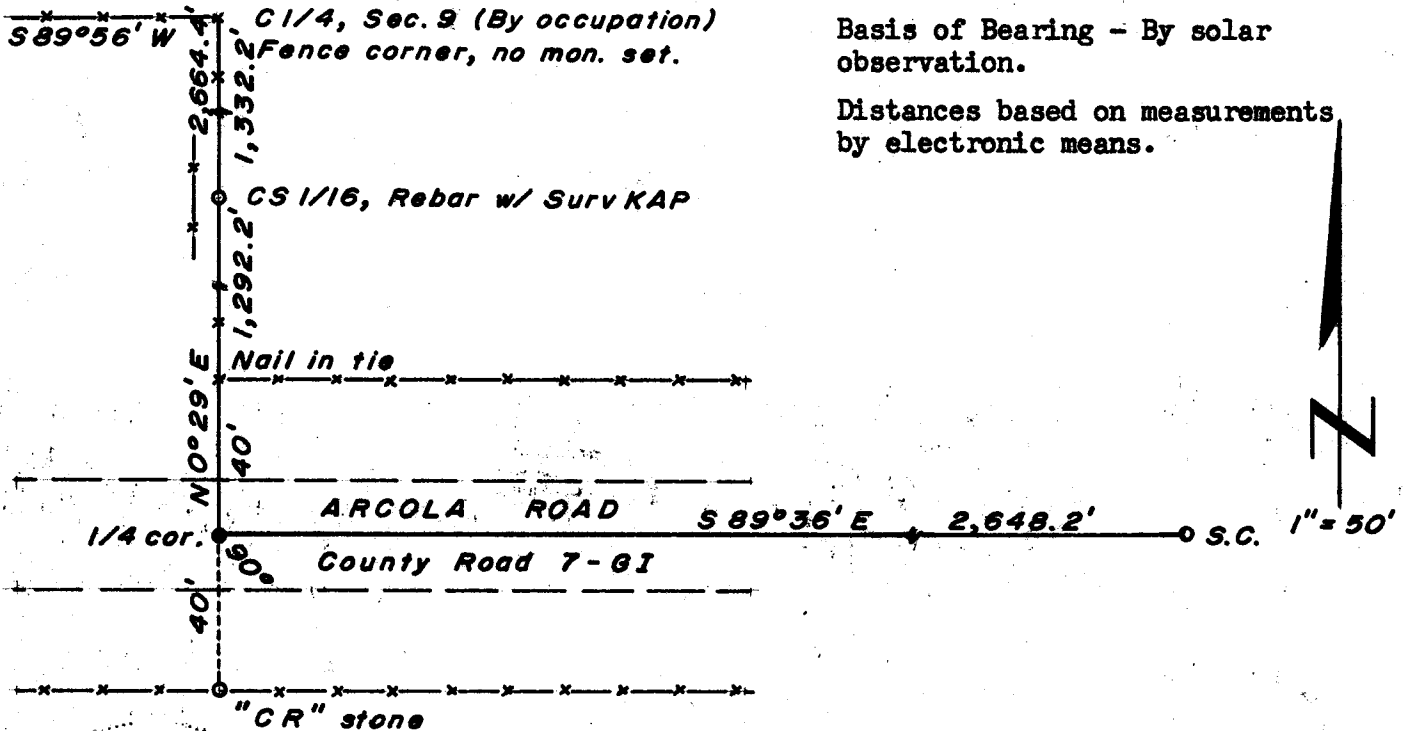
DESCRIPTION OF CORNER EVIDENCE FOUND, AND ORIGINAL RECORD (if known)

LOCATION **Corner position determined from "C R" stone found as shown on sketch.**
1/4 S. 9 "C R" stone set by Laramie County Surveyor.
1/4 S. 16
T. 13N., R. 63W.
6th P.M.

DESCRIPTION OF MONUMENT AND ACCESSORIES ESTABLISHED TO PERPETUATE THE ORIGINAL LOCATION OF THIS CORNER:

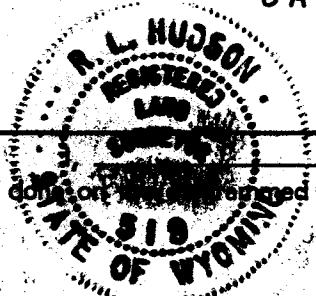
At the corner: **No monument set, corner falls in graded road.**
 Accessories: **"C R" stone (granite boulder) bears S 0°24' W, 40.00 feet distant.**
40d nail set in top of RR tie bears N 0°24' E, 40.00 feet distant.
"C R" stone, found lying on ground left as memorial at RR tie, north of corner.

SKETCH, WITH COURSE AND DISTANCE TO ADJACENT CORNER IF DETERMINED IN THIS SURVEY.
 (May Sketch or Paste Reproduction on Reverse Side.)



Basis of Bearing - By solar observation.

Distances based on measurements by electronic means.



R.L. Hudson

certify that I have carefully performed or reviewed the work done on the foregoing corner as reported on this recordation form and approve the same.

R.L. Hudson
 Signature of Surveyor

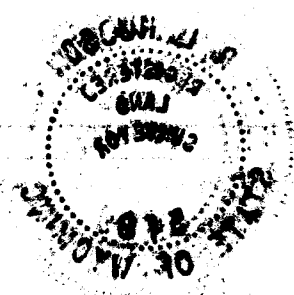
Wyoming L.S. No. 519
 Registration No.

STATE OF WYOMING,
 Office of Clerk and Recorder,
 County of Laramie

This "corner record" was filed for record on the 29 day of December, 1975, was noted on the cross-index plat and is assigned page No. 14, in book No. 13-63

County Official

Cross Index No. <u>14</u>	T. <u>13</u>	R. <u>63</u>	Mer.
_____	T. _____	R. _____	Mer.
_____	T. _____	R. _____	Mer.
_____	T. _____	R. _____	Mer.
_____	T. _____	R. _____	Mer.
_____	T. _____	R. _____	Mer.
_____	T. _____	R. _____	Mer.



Photographed ✓
Indexed ✓
Filed ✓
Assessor ✓

The State of Louisiana }
County of Leflore } SS

This instrument was filed for record
at 2 42 o'clock P M. on the
29th day of Dec
A. D. 19 75 and duly recorded in
book 1 on page 106

James C. Whitmore

County Clerk & Ex-Officio Register of Deeds
By _____ Deputy